

SECTION 1: HISTORICAL



TABLE 1: CASUALTY RATES HISTORICAL YEAR ENDING 31 DECEMBER

Year	Population (000)	Vehicles* (000)	INJURIES			FATALITIES		
			Number of Injuries	Per 100,000 Population	Per 10,000 Vehicles	Number of Fatalities	Per 100,000 Population	Per 10,000 Vehicles
1951	1970.5	447.1	6938	352	155.2	292	14.8	6.5
1952	2024.6	494.2	7448	368	150.7	272	13.4	5.5
1953	2074.7	513.7	7686	371	149.6	313	15.1	6.1
1954	2118.4	553.5	7875	372	142.3	360	17.0	6.5
1955	2164.8	601.1	8976	415	149.3	333	15.4	5.5
1956	2209.2	638.3	9758	442	152.9	329	14.9	5.2
1957	2262.8	672.6	11053	489	164.3	384	17.0	5.7
1958	2360.0	702.9	11408	483	162.3	379	16.1	5.4
1959	2359.7	728.2	11703	496	160.7	349	14.8	4.8
1960	2403.6	762.7	12443	518	163.1	374	15.6	4.9
1961	2461.3	806.3	12796	520	158.7	393	16.0	4.9
1962	2515.8	844.1	13776	548	163.2	398	15.8	4.7
1963	2566.8	899.4	14447	563	160.6	394	15.3	4.4
1964	2617.0	963.9	16266	622	168.8	428	16.4	4.4
1965	2663.8	1013.8	17093	642	168.6	559	21.0	5.5
1966	2711.3	1060.2	18194	671	171.6	549	20.2	5.2
1967	2745.0	1087.6	17409	634	160.1	570	20.8	5.2
1968	2773.0	1114.7	17698	638	158.8	522	18.8	4.7
1969	2804.0	1148.7	18726	668	163.0	570	20.3	5.0
1970	2852.1	1208.7	20791	729	172.0	655	23.0	5.4
1971	2898.5	1272.4	21607	746	169.8	677	23.4	5.3
1972	2959.7	1349.1	22315	754	165.4	713	24.1	5.3
1973	3024.9	1438.8	23385	773	162.5	843	27.9	5.9
1974	3091.9	1515.3	20829	674	137.5	676	21.9	4.5
1975	3143.7	1574.5	19839	631	126.0	628	20.0	4.0
1976	3163.4	1631.3	17895	566	109.7	609	19.3	3.7
1977	3166.4	1642.8	17525	554	106.7	702	22.2	4.3
1978	3165.2	1675.1	15178	480	90.6	654	20.7	3.9
1979	3163.9	1732.9	13903	439	80.2	554	17.5	3.2
1980	3176.4	1789.4	15872	500	88.7	599	18.9	3.3
1981	3194.5	1848.6	15479	485	83.7	669	20.9	3.6
1982	3226.8	1882.5	16194	502	86.0	673	20.9	3.6
1983	3264.8	1917.4	16491	505	86.0	644	19.7	3.4
1984	3293.0	1968.9	17524	532	89.0	669	20.3	3.4
1985	3303.1	1996.1	18912	573	94.7	747	22.6	3.7
1986	3313.5	2010.1	18874	570	93.9	766	23.1	3.8
1987	3342.1	2030.6	18728	560	92.2	795	23.8	3.9
1988	3345.2	2045.4	17346	519	84.8	727	21.7	3.6
1989	3369.8	2108.4	16594	492	78.7	755	22.4	3.6
1990	3410.4	2197.7	17719	520	80.6	729	21.4	3.3
1991	3449.7	2220.1	16767	486	75.5	650	18.8	2.9
1992	3485.4	2227.1	16121	463	72.4	646	18.5	2.9
1993	3524.8	2243.8	15108	429	67.3	600	17.0	2.7
1994	3577.2	2289.3	16600	464	72.5	580	16.2	2.5
1995	3643.2	2354.6	16870	463	71.6	582	16.0	2.5
1996	3717.4	2379.8	14796	398	62.2	514	13.8	2.2
1997	3761.1	2392.7	13375	356	55.9	539	14.3	2.3
1998	3790.9	2440.4	12412	327	50.9	501	13.2	2.1
1999	3810.7	2512.3	11999	315	47.8	509	13.4	2.0
2000	3830.8	2601.7	10962	286	42.1	462	12.1	1.8
2001	3850.1	2633.2	12368	321	47.0	455	11.8	1.7
2002	3939.1	2709.5	13918	353	51.4	405	10.3	1.5
2003	4009.2	2801.0	14372	359	51.3	461	11.5	1.6
2004	4060.9	2920.7	13890	342	47.6	435	10.7	1.5
2005	4098.3	3030.4	14451	353	47.7	405	9.9	1.3
2006	4139.5	3124.3	15174	367	48.6	393	9.5	1.3
2007	4228.3	3189.1	16013	379	50.2	421	10.0	1.3
2008	4268.6	3247.8	15174	355	46.7	365	8.6	1.1
2009	4315.8	3220.3	14541	337	45.2	384	8.9	1.2

NOTES: Population: From 1997 the population is the estimated resident population at 30 June - SNZ INFOSHARE DPE group.

* Vehicles: See Note 16 for details. From 1998 (the first full year with Continuous Vehicle Licensing) vehicle numbers include registered cars, vans, trucks, buses, motor caravans, motorcycles and mopeds but exclude those with an exempt or restoration licence. From 1986 to 1997 vehicle numbers are estimates. Prior to 1986 vehicle numbers were derived from annual licence transactions.

FIGURE 1: ROAD DEATHS

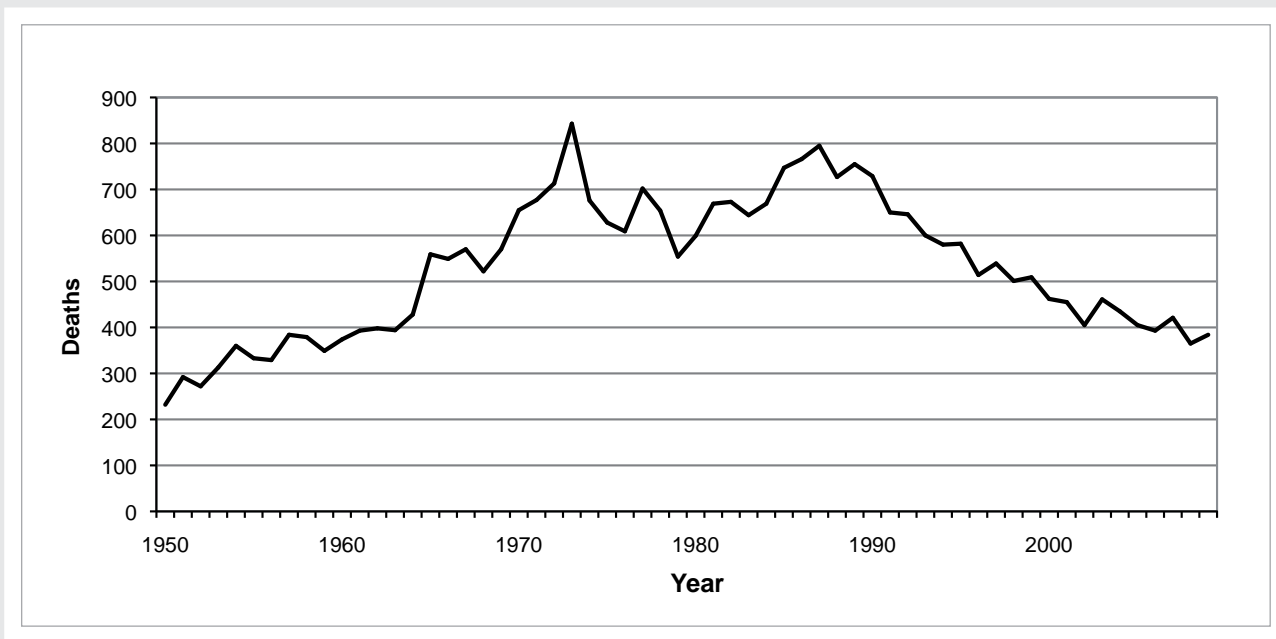


FIGURE 2: DEATHS PER VEHICLE AND PER CAPITA

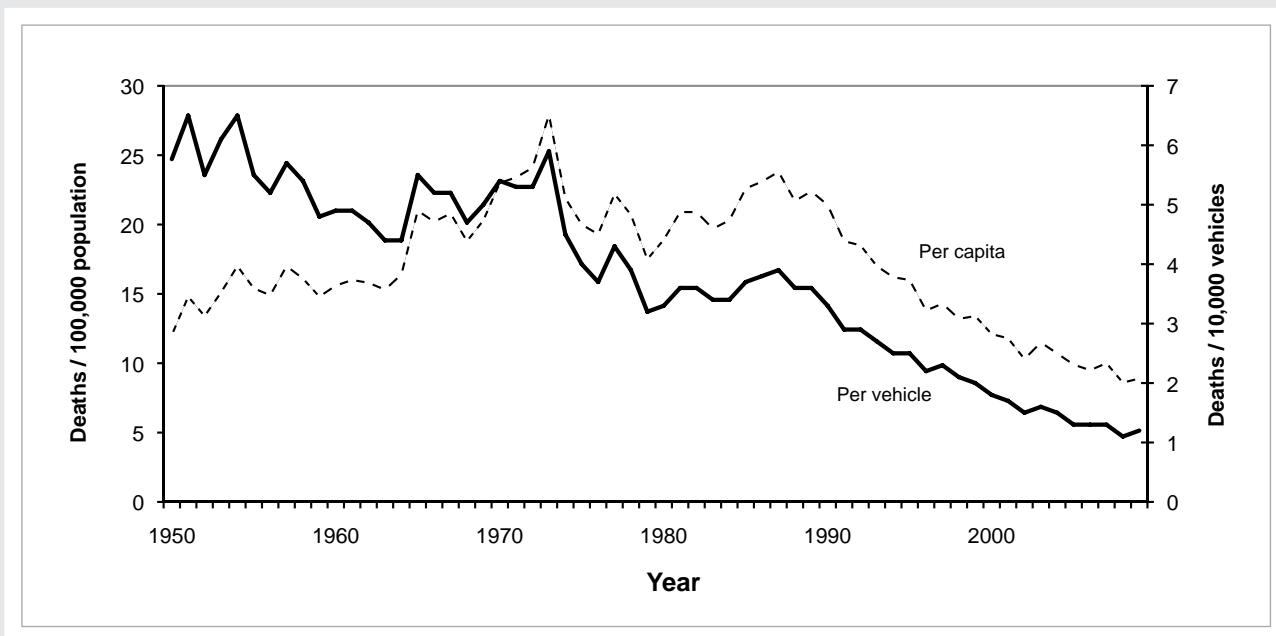


FIGURE 3: REPORTED INJURIES

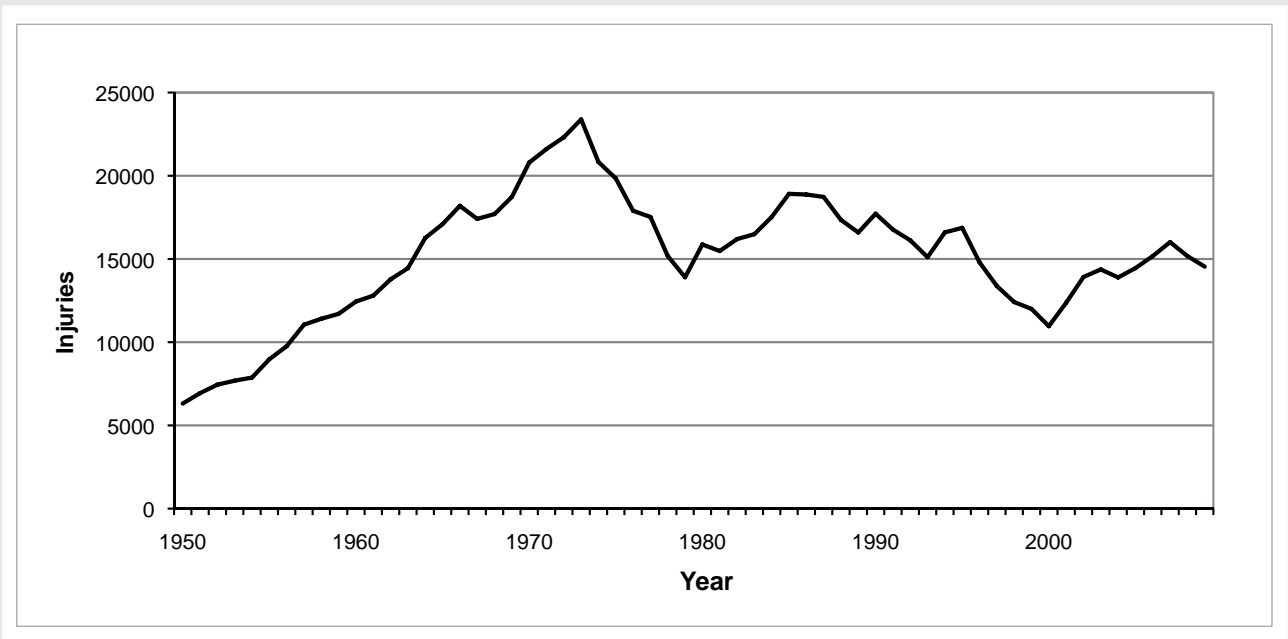


FIGURE 4: INJURIES PER VEHICLE AND PER CAPITA

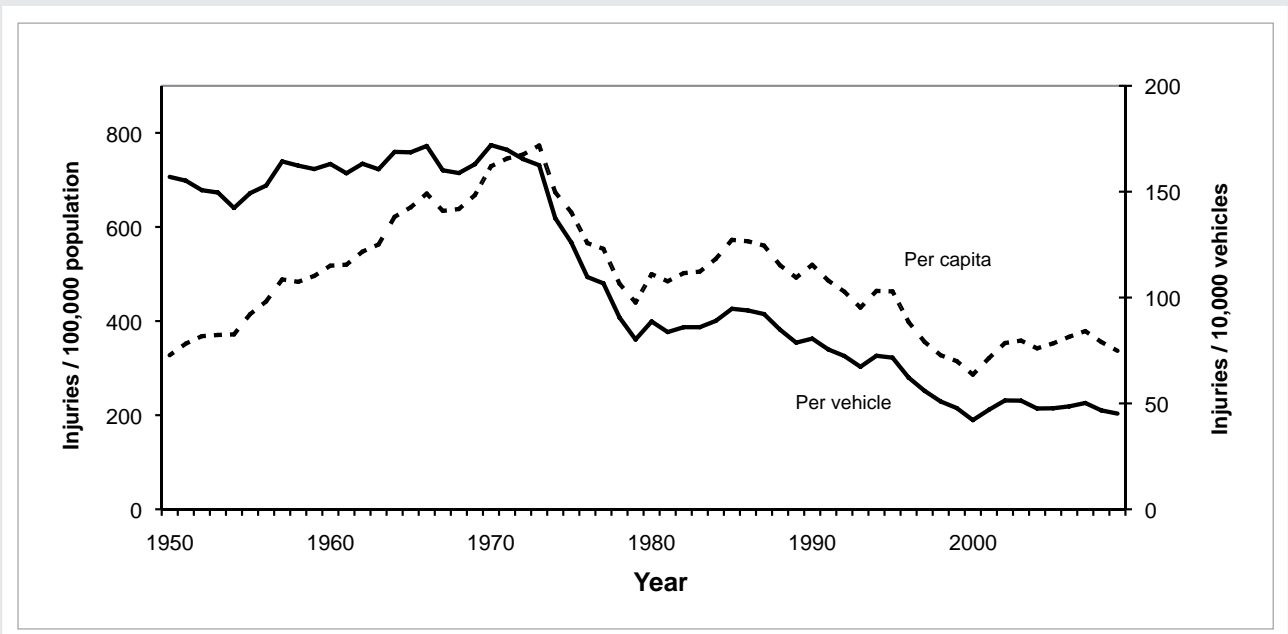


TABLE 2: CRASH RATES HISTORICAL YEAR ENDING 31 DECEMBER

Year	Population (000)	Vehicles* (000)	INJURY			FATAL		
			Injury crashes	Per 100,000 Population	Per 10,000 Vehicles	Fatal crashes	Per 100,000 Population	Per 10,000 Vehicles
1951	1970.5	447.1	4952	251	110.8	272	13.8	6.1
1952	2024.6	494.2	5336	264	108.0	253	12.5	5.1
1953	2074.7	513.7	5377	259	104.7	292	14.1	5.7
1954	2118.4	553.5	5561	263	100.5	334	15.8	6.0
1955	2164.8	601.1	6372	294	106.0	304	14.0	5.1
1956	2209.2	638.3	6736	305	105.5	306	13.9	4.8
1957	2262.8	672.6	7593	336	112.9	355	15.7	5.3
1958	2360.0	702.9	7848	333	111.7	346	14.7	4.9
1959	2359.7	728.2	7952	337	109.2	313	13.3	4.3
1960	2403.6	762.7	8503	354	111.5	341	14.2	4.5
1961	2461.3	806.3	8679	353	107.6	352	14.3	4.4
1962	2515.8	844.1	9270	369	109.8	374	14.9	4.4
1963	2566.8	899.4	9514	371	105.8	357	13.9	4.0
1964	2617.0	963.9	10960	419	113.7	376	14.4	3.9
1965	2663.8	1013.8	11377	427	112.2	494	18.5	4.9
1966	2711.3	1060.2	11986	442	113.1	498	18.4	4.7
1967	2745.0	1087.6	11446	417	105.2	501	18.3	4.6
1968	2773.0	1114.7	11600	418	104.1	465	16.8	4.2
1969	2804.0	1148.7	12050	430	104.9	504	18.0	4.4
1970	2852.1	1208.7	12722	446	105.3	578	20.3	4.8
1971	2898.5	1272.4	13404	462	105.3	600	20.7	4.7
1972	2959.7	1349.1	14032	474	104.0	622	21.0	4.6
1973	3024.9	1438.8	14830	490	103.1	741	24.5	5.2
1974	3091.9	1515.3	13497	437	89.1	612	19.8	4.0
1975	3143.7	1574.5	13156	419	83.6	574	18.3	3.6
1976	3163.4	1631.3	11783	373	72.2	538	17.0	3.3
1977	3166.4	1642.8	11443	361	69.7	625	19.7	3.8
1978	3165.2	1675.1	9795	310	58.5	589	18.6	3.5
1979	3163.9	1732.9	9212	291	53.2	502	15.9	2.9
1980	3176.4	1789.4	10204	321	57.0	535	16.8	3.0
1981	3194.5	1848.6	10079	316	54.5	586	18.3	3.2
1982	3226.8	1882.5	10656	330	56.6	603	18.7	3.2
1983	3264.8	1917.4	10951	335	57.1	568	17.4	3.0
1984	3293.0	1968.9	11949	363	60.7	612	18.6	3.1
1985	3303.1	1996.1	12894	390	64.6	660	20.0	3.3
1986	3313.5	2010.1	12806	387	63.7	656	19.8	3.3
1987	3342.1	2030.6	12674	379	62.4	687	20.6	3.4
1988	3345.2	2045.4	11936	357	58.4	624	18.7	3.1
1989	3369.8	2108.4	11395	338	54.0	646	19.2	3.1
1990	3410.4	2197.7	12179	357	55.4	637	18.7	2.9
1991	3449.7	2220.1	11609	337	52.3	554	16.1	2.5
1992	3485.4	2227.1	11093	318	49.8	542	15.6	2.4
1993	3524.8	2243.8	10477	297	46.7	517	14.7	2.3
1994	3577.2	2289.3	11380	318	49.7	496	13.9	2.2
1995	3643.2	2354.6	11718	322	49.8	502	13.8	2.1
1996	3717.4	2379.8	10107	272	42.5	457	12.3	1.9
1997	3761.1	2392.7	9013	240	37.7	468	12.4	2.0
1998	3790.9	2440.4	8334	220	34.2	435	11.5	1.8
1999	3810.7	2512.3	8010	210	31.9	434	11.4	1.7
2000	3830.8	2601.7	7447	194	28.6	383	10.0	1.5
2001	3850.1	2633.2	8470	220	32.2	395	10.3	1.5
2002	3939.1	2709.5	9798	249	36.2	365	9.3	1.3
2003	4009.2	2801.0	10210	255	36.5	405	10.1	1.4
2004	4060.9	2920.7	9992	246	34.2	375	9.2	1.3
2005	4098.3	3030.4	10467	255	34.5	341	8.3	1.1
2006	4139.5	3124.3	10943	264	35.0	350	8.5	1.1
2007	4228.3	3189.1	11667	276	36.6	375	8.9	1.2
2008	4268.6	3247.8	11316	265	34.8	330	7.7	1.0
2009	4315.8	3220.3	10788	250	33.5	337	7.8	1.0

NOTES: Population: From 1997 the population is the estimated resident population at 30 June - SNZ INFOSHARE DPE group.

* Vehicles: See Note 16 for details. From 1998 (the first full year with Continuous Vehicle Licensing) vehicle numbers include registered cars, vans, trucks, buses, motor caravans, motorcycles and mopeds but exclude those with an exempt or restoration licence. From 1986 to 1997 vehicle numbers are estimates. Prior to 1986 vehicle numbers were derived from annual licence transactions.



TABLE 2A: CRASH SEVERITY YEAR ENDING 31 DECEMBER

Year	NUMBER OF CRASHES				NUMBER OF CASUALTIES		
	Fatal	Serious	Minor	Non-injury	Fatal	Serious	Minor
1985	660	4311	8583	-	747	5406	13506
1986	656	4206	8600	-	766	5297	13577
1987	687	4036	8640	-	796	5177	13551
1988	624	3498	8443	-	727	4371	12983
1989	649	3067	8336	18384	758	3948	12672
1990	638	3451	8741	20230	730	4415	13326
1991	555	3190	8506	20248	651	4056	12839
1992	542	2717	8394	19563	646	3425	12728
1993	517	2533	7986	18198	600	3221	11945
1994	496	2583	8797	18437	580	3268	13332
1995	502	2473	9245	22306	582	3153	13717
1996	457	2321	7786	23000	514	2939	11857
1997	468	2030	6983	23973	539	2611	10764
1998	435	1899	6435	22904	501	2400	10012
1999	434	1904	6106	24284	509	2428	9571
2000	383	1769	5678	23961	462	2243	8719
2001	395	1918	6552	27114	455	2435	9933
2002	365	2111	7687	27697	405	2600	11318
2003	405	2041	8169	27058	461	2578	11794
2004	375	2022	7970	26393	435	2491	11399
2005	341	2071	8396	27217	405	2531	11920
2006	350	2137	8806	28171	393	2629	12545
2007	375	2116	9551	29317	421	2654	13359
2008	330	2098	9218	27527	365	2531	12643
2009	337	1961	8827	26901	384	2425	12116

NOTE: Non-injury crash data began nationally in 1989.

**TABLE 2B: CRASHES AND CASUALTIES ON OPEN ROADS AND URBAN ROADS
YEAR ENDING 31 DECEMBER**

Year	OPEN ROADS				URBAN ROADS			
	Fatal crashes	Injury crashes	Deaths	Injuries	Fatal crashes	Injury crashes	Deaths	Injuries
1985	355	3292	423	5978	305	9602	324	12934
1986	378	3488	464	6310	278	9321	302	12564
1987	417	3638	499	6536	270	9038	297	12192
1988	383	3375	465	6021	241	8566	262	11333
1989	420	3401	505	5983	229	8002	253	10637
1990	396	3699	470	6502	242	8493	260	11239
1991	362	3898	449	6655	193	7798	202	10240
1992	342	3741	429	6377	200	7370	217	9776
1993	344	3554	402	6093	173	6965	198	9073
1994	353	3733	426	6387	143	7647	154	10213
1995	343	4085	407	6730	159	7633	175	10140
1996	308	3652	357	6138	149	6455	157	8658
1997	333	3201	393	5513	135	5812	146	7862
1998	291	3166	350	5393	144	5168	151	7019
1999	320	3139	389	5394	114	4871	120	6605
2000	286	2960	360	4960	97	4487	102	6002
2001	285	3390	342	5593	110	5080	113	6775
2002	265	3773	298	6037	100	6025	107	7881
2003	288	4071	338	6425	117	6139	123	7947
2004	272	4011	322	6198	103	5981	113	7692
2005	248	4238	306	6485	93	6229	99	7966
2006	246	4345	285	6631	104	6598	108	8543
2007	271	4681	315	7032	104	7059	106	9110
2008	244	4419	275	6466	86	6991	90	8850
2009	245	4126	282	6181	92	6662	102	8360

NOTES: For urban/open road classification see Note 11.

Historical data in these tables may not agree exactly with other tables as the data files have been updated prior to the data extraction for these new tables.

TABLE 3: TYPE OF ROAD USER KILLED AND INJURED YEAR ENDING 31 DECEMBER

Year	Drivers of motor vehicles		Passengers in motor vehicles		Motorcyclist and pillion passengers		Pedal cyclists		Pedestrians		Other road users		Unknown (1)		Total casualties	
		()		()		()		()		()		()		()		()
1951	1387	(60)	2399	(79)	1117	(47)	1033	(32)	918	(70)	88	(4)	-	(-)	6942	(292)
1952	1590	(49)	2482	(62)	1338	(66)	1077	(31)	902	(64)	54	(-)	-	(-)	7443	(272)
1953	1643	(58)	2686	(72)	1293	(72)	1002	(26)	1012	(83)	52	(2)	-	(-)	7688	(313)
1954	1739	(72)	2700	(90)	1312	(73)	1055	(37)	1019	(87)	51	(1)	-	(-)	7876	(360)
1955	2144	(78)	3161	(67)	1295	(80)	1202	(26)	1114	(81)	61	(1)	-	(-)	8977	(333)
1956	2473	(87)	3605	(99)	1269	(37)	1176	(19)	1173	(86)	63	(1)	-	(-)	9759	(329)
1957	2964	(92)	4098	(103)	1397	(48)	1304	(41)	1243	(98)	49	(2)	-	(-)	11055	(384)
1958	2992	(101)	4148	(104)	1629	(46)	1329	(38)	1272	(89)	39	(1)	-	(-)	11409	(379)
1959	3076	(93)	4307	(99)	1673	(37)	1291	(27)	1313	(93)	43	(-)	-	(-)	11703	(349)
1960	3478	(92)	4685	(123)	1625	(36)	1281	(30)	1347	(92)	28	(1)	-	(-)	12444	(374)
1961	3679	(103)	4757	(113)	1629	(43)	1354	(32)	1341	(101)	37	(1)	-	(-)	12797	(393)
1962	4038	(124)	5087	(108)	1749	(46)	1401	(31)	1447	(88)	55	(1)	-	(-)	13777	(398)
1963	4477	(115)	5409	(110)	1711	(44)	1320	(27)	1517	(95)	46	(3)	-	(-)	14480	(394)
1964	5166	(148)	6204	(116)	2016	(40)	1315	(26)	1524	(97)	44	(1)	-	(-)	16269	(428)
1965	5570	(181)	6540	(170)	2061	(48)	1289	(33)	1587	(123)	50	(4)	-	(-)	17097	(559)
1966	6144	(196)	7120	(162)	2072	(42)	1205	(29)	1609	(114)	50	(6)	-	(-)	18200	(549)
1967	5944	(198)	6812	(188)	1918	(46)	1132	(25)	1566	(109)	41	(4)	-	(-)	17413	(570)
1968	6282	(174)	6828	(179)	1807	(28)	1083	(24)	1658	(116)	41	(1)	-	(-)	17699	(522)
1969	6566	(204)	7474	(179)	1909	(36)	1039	(33)	1696	(118)	42	(-)	-	(-)	18726	(570)
1970	7701	(269)	8122	(211)	2077	(43)	1041	(28)	1786	(101)	67	(3)	-	(-)	20794	(655)
1971	7558	(253)	8148	(227)	2911	(52)	1083	(29)	1861	(113)	49	(3)	-	(-)	21610	(677)
1972	7324	(260)	8147	(225)	3766	(79)	1029	(22)	1994	(125)	57	(2)	-	(-)	22317	(713)
1973	7682	(273)	8236	(250)	4224	(130)	1018	(30)	2180	(157)	48	(3)	-	(-)	23388	(843)
1974	6819	(225)	6896	(190)	4092	(107)	969	(26)	2024	(125)	32	(3)	-	(-)	20832	(676)
1975	6266	(230)	6000	(170)	3625	(96)	745	(18)	1747	(112)	38	(2)	1420	(-)	19841	(628)
1976	5796	(221)	5746	(180)	3330	(92)	736	(14)	1476	(102)	29	(-)	782	(-)	17895	(609)
1977	5937	(252)	5526	(207)	3016	(98)	631	(21)	1448	(124)	21	(-)	946	(-)	17525	(702)
1978	4990	(228)	4831	(176)	2713	(104)	588	(30)	1224	(116)	7	(-)	825	(-)	15178	(654)
1979	4465	(200)	4071	(140)	2810	(90)	623	(15)	1157	(106)	14	(3)	766	(-)	13906	(554)
1980	5592	(223)	5054	(163)	3222	(91)	741	(22)	1249	(98)	12	(1)	2	(1)	15872	(599)
1981	5509	(223)	4692	(205)	3377	(116)	756	(21)	1123	(104)	20	(-)	2	(-)	15479	(669)
1982	5668	(264)	4934	(177)	3568	(113)	886	(30)	1128	(89)	10	(-)	-	(-)	16194	(673)
1983	6121	(218)	4851	(196)	3451	(108)	912	(19)	1147	(102)	9	(1)	-	(-)	16491	(644)
1984	6687	(217)	4778	(176)	3746	(125)	957	(31)	1343	(119)	12	(1)	1	(-)	17524	(669)
1985	7358	(284)	5240	(185)	3940	(132)	1120	(21)	1229	(125)	10	(-)	15	(-)	18912	(747)
1986	7601	(287)	5382	(218)	3593	(127)	1012	(22)	1268	(112)	17	(-)	1	(-)	18874	(766)
1987	7814	(307)	5196	(216)	3389	(144)	1058	(18)	1261	(110)	10	(-)	-	(-)	18728	(795)
1988	7381	(270)	4862	(206)	2862	(146)	1097	(20)	1122	(83)	15	(2)	7	(-)	17346	(727)
1989	7295	(289)	4722	(224)	2467	(139)	1054	(20)	1044	(81)	12	(1)	-	(-)	16594	(754)
1990	8236	(278)	5054	(205)	2203	(114)	1053	(27)	1161	(104)	12	(1)	-	(-)	17719	(729)
1991	7838	(278)	4858	(183)	2061	(78)	1000	(22)	1015	(88)	5	(1)	-	(-)	16777	(650)
1992	7788	(286)	4564	(179)	1816	(88)	941	(17)	1007	(76)	5	(-)	-	(-)	16121	(646)
1993	7515	(259)	4159	(167)	1561	(80)	910	(17)	949	(74)	14	(3)	-	(-)	15108	(600)
1994	8324	(272)	4606	(166)	1721	(72)	882	(15)	1063	(54)	4	(1)	-	(-)	16600	(580)
1995	8818	(249)	4637	(168)	1539	(78)	813	(15)	1053	(71)	10	(1)	-	(-)	16870	(582)
1996	7653	(238)	4184	(151)	1223	(48)	754	(13)	969	(63)	13	(1)	-	(-)	14796	(514)
1997	6825	(252)	3747	(165)	1142	(56)	724	(12)	925	(54)	12	(-)	-	(-)	13375	(539)
1998	6403	(221)	3471	(139)	969	(54)	626	(16)	930	(71)	13	(-)	-	(-)	12412	(501)
1999	6311	(255)	3367	(141)	791	(42)	619	(8)	895	(63)	16	(-)	-	(-)	11999	(509)
2000	5667	(244)	3068	(132)	697	(31)	559	(19)	953	(35)	18	(1)	-	(-)	10962	(462)
2001	6655	(233)	3336	(125)	669	(35)	696	(10)	986	(52)	26	(-)	-	(-)	12368	(455)
2002	7662	(220)	3641	(96)	744	(30)	771	(14)	1065	(45)	35	(-)	-	(-)	13918	(405)
2003	8204	(235)	3601	(133)	761	(28)	722	(6)	1058	(58)	26	(1)	-	(-)	14372	(461)
2004	8043	(222)	3384	(133)	721	(34)	716	(7)	999	(38)	27	(1)	-	(-)	13890	(435)
2005	8308	(203)	3521	(123)	903	(36)	751	(12)	943	(31)	25	(-)	-	(-)	14451	(405)
2006	8612	(191)	3713	(108)	1017	(38)	833	(9)	960	(44)	39	(3)	-	(-)	15174	(393)
2007	9131	(202)	3758	(119)	1336	(41)	880	(12)	868	(45)	40	(2)	-	(-)	16013	(421)
2008	8590	(162)	3412	(104)	1421	(51)	902	(10)	945	(31)	46	(7)	-	(-)	15316	(365)
2009	8017	(192)	3370	(103)	1369	(48)	825	(8)	914	(31)	46	(2)	-	(-)	14541	(384)

NOTE: The figures in brackets are the numbers killed and are not included in the adjacent totals.

(1) See Note 2.



FIGURE 5: PROPORTION OF DEATHS BY ROAD USER TYPE

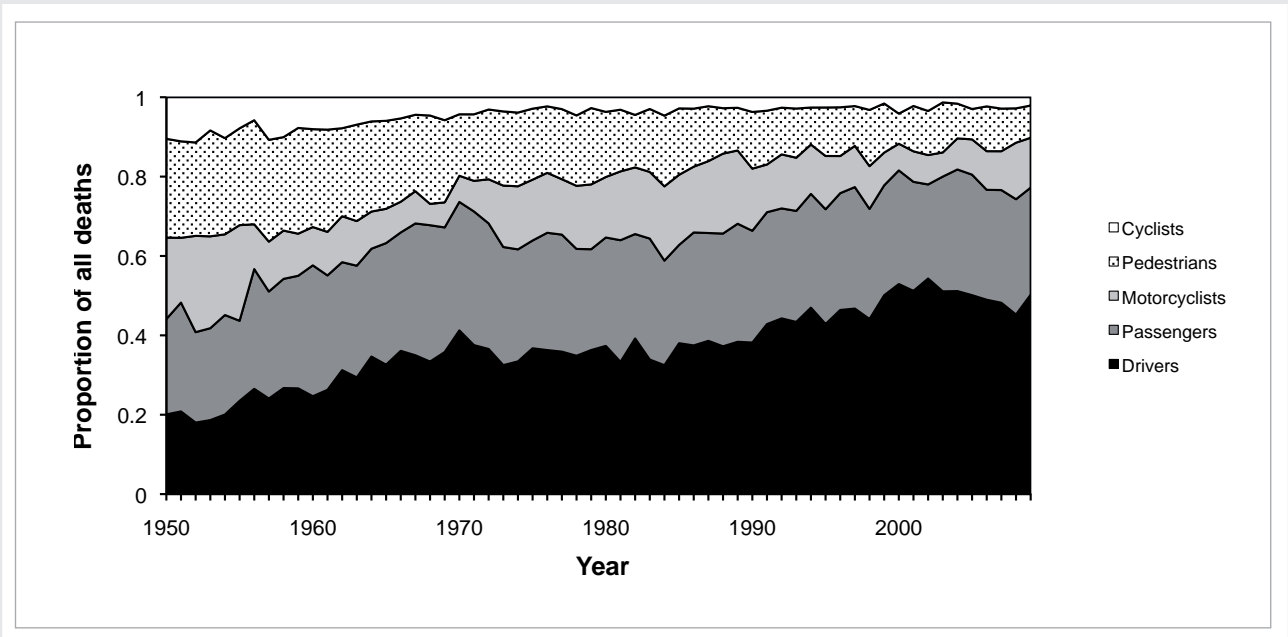


FIGURE 6: PROPORTION OF INJURIES BY ROAD USER TYPE

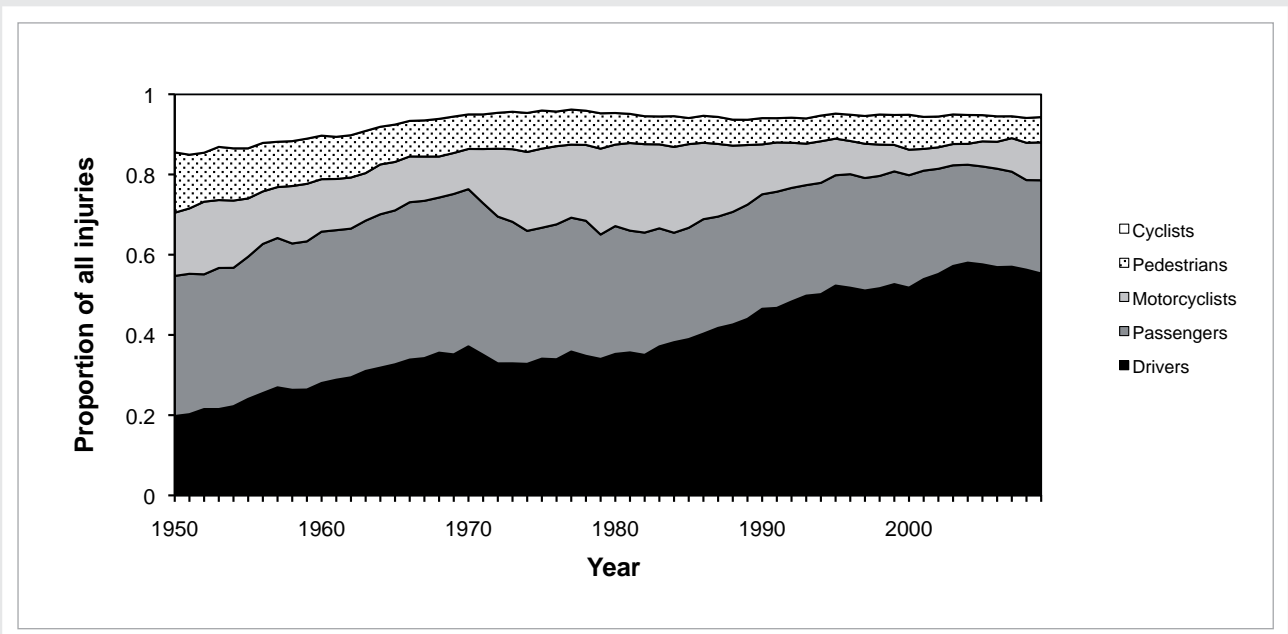


TABLE 4: CRASHES IN HOLIDAY PERIODS HISTORICAL

Year	Christmas–New Year			Easter			Queen's Birthday			Labour Weekend			
	Crashes	Casualties	Period (days)	Crashes	Casualties		Crashes	Casualties		Crashes	Casualties		
1956	211	342	(12)	9.6	96	145	(6)	121	202	(1)	90	153	(3)
1957	244	400	(13)	9.6	158	254	(7)	109	169	(4)	109	170	(3)
1958	232	358	(15)	11.6	170	275	(13)	121	185	(9)	104	174	(5)
1959	321	506	(8)	11.6	154	251	(4)	143	214	(2)	122	177	(5)
1960	252	414	(18)	11.6	155	256	(12)	140	225	(5)	123	210	(5)
1961	228	346	(13)	11.6	143	235	(8)	107	185	(8)	96	182	(3)
1962	255	421	(10)	9.6	159	298	(10)	136	221	(6)	130	210	(3)
1963	276	457	(11)	9.6	179	308	(10)	176	298	(6)	152	251	(8)
1964	302	500	(13)	11.6	192	340	(11)	178	279	(6)	169	291	(4)
1965	343	557	(19)	11.6	218	372	(16)	166	256	(7)	153	250	(6)
1966	448	749	(9)	11.6	236	382	(7)	174	281	(12)	146	269	(10)
1967	253	399	(20)	11.6	203	306	(13)	171	281	(7)	139	232	(9)
1968	288	429	(20)	9.6	189	317	(8)	191	317	(7)	169	292	(13)
1969	403	713	(18)	11.6	176	328	(12)	204	357	(11)	175	298	(9)
1970	453	824	(26)	11.6	196	367	(8)	144	251	(9)	157	290	(10)
1971	468	819	(34)	11.6	215	425	(21)	174	284	(6)	170	340	(8)
1972	477	826	(37)	11.6	234	421	(15)	154	243	(15)	202	363	(10)
1973	366	585	(16)	9.6	229	415	(16)	210	352	(24)	208	399	(11)
1974	363	574	(29)	9.6	245	434	(17)	163	257	(15)	194	352	(6)
1975	401	628	(24)	11.6	202	327	(15)	185	273	(9)	186	290	(12)
1976	360	584	(19)	11.6	216	346	(11)	165	238	(17)	151	263	(3)
1977	399	609	(34)	11.6	182	293	(9)	161	240	(7)	148	252	(2)
1978	244	346	(30)	11.6	158	259	(7)	132	208	(22)	120	205	(16)
1979	257	416	(13)	9.6	144	219	(10)	105	154	(7)	115	202	(8)
1980	273	481	(32)	11.6	138	213	(15)	122	197	(7)	139	232	(9)
1981	356	602	(35)	11.6	136	248	(5)	114	158	(15)	147	266	(10)
1982	289	473	(18)	11.6	150	240	(13)	144	229	(9)	136	208	(7)
1983	341	523	(17)	11.6	164	285	(11)	142	211	(5)	144	248	(13)
1984	282	439	(13)	9.6	160	258	(15)	134	223	(11)	140	218	(9)
1985	338	532	(25)	9.6	177	291	(9)	156	231	(12)	133	225	(10)
1986	369	554	(31)	11.6	168	254	(15)	149	239	(13)	146	232	(6)
1987	344	544	(22)	11.6	163	254	(19)	161	259	(8)	157	243	(12)
1988	378	594	(16)	11.6	186	283	(12)	132	202	(8)	142	213	(10)
1989	377	596	(19)	11.6	153	214	(16)	140	214	(13)	120	181	(5)
1990	313	487	(18)	9.6	155	237	(17)	150	220	(9)	141	225	(9)
1991	332	537	(17)	9.6	162	238	(12)	119	177	(6)	107	180	(11)
1992	340	528	(29)	11.6	129	185	(12)	107	172	(9)	133	178	(9)
1993	244	372	(17)	11.6	103	165	(11)	118	179	(3)	93	149	(8)
1994	339	542	(19)	11.6	141	228	(10)	134	214	(7)	134	191	(7)
1995	380	598	(26)	11.6	137	192	(9)	120	189	(2)	143	220	(7)
1996	272	432	(14)	9.6	141	229	(7)	120	186	(10)	100	153	(5)
1997	248	387	(26)	11.6	132	218	(6)	108	156	(7)	80	119	(5)
1998	247	391	(24)	11.6	109	176	(3)	90	134	(4)	82	124	(8)
1999	249	398	(17)	11.6	99	145	(7)	76	109	(8)	87	139	(6)
2000	251	409	(20)	11.6	96	134	(6)	74	96	(7)	79	141	(7)
2001	250	417	(21)	9.6	101	161	(4)	83	125	(5)	101	142	(6)
2002	222	323	(17)	9.6	126	214	(3)	94	141	(3)	98	135	(3)
2003	272	408	(13)	11.6	126	190	(3)	84	131	(4)	80	117	(3)
2004	318	513	(11)	11.6	122	170	(4)	112	146	(4)	87	136	(5)
2005	313	488	(22)	11.6	142	209	(9)	99	136	(3)	85	112	(3)
2006	294	444	(9)	11.6	119	170	(5)	106	154	(3)	128	199	(3)
2007	266	413	(18)	9.6	144	206	(6)	129	188	(5)	100	145	(4)
2008	334	458	(25)	11.6	142	196	(9)	119	167	(3)	101	159	(4)
2009	-	-	()	-	132	193	(7)	120	159	(10)	95	132	(8)

NOTES: The figures in brackets are the numbers killed and are not included in the adjacent injury figures. For the Christmas–New Year holiday period the year refers to the year in which the holiday period began. The number of days covered by the Christmas holiday period can vary. For the other three holiday periods the number of days is the same for all years. Also see Note 14.

